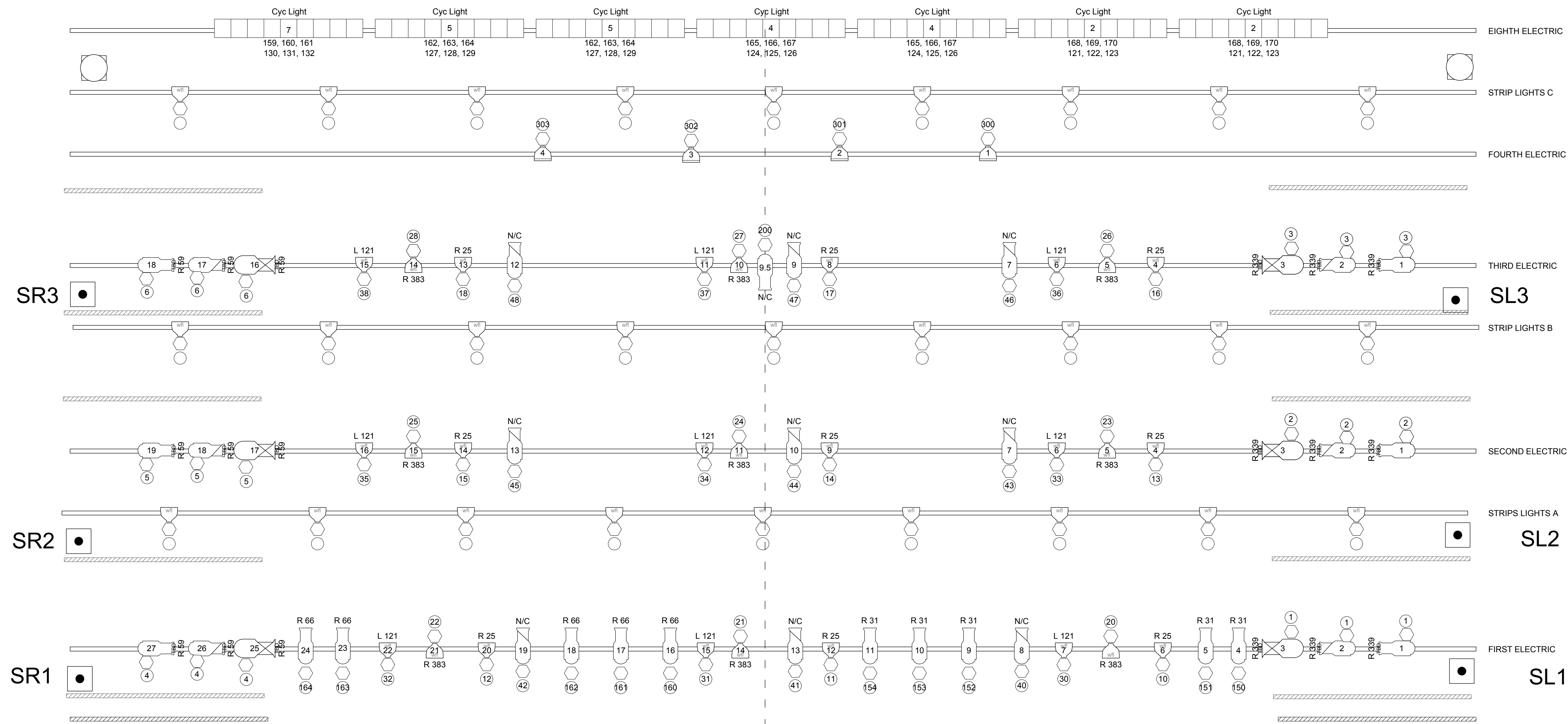
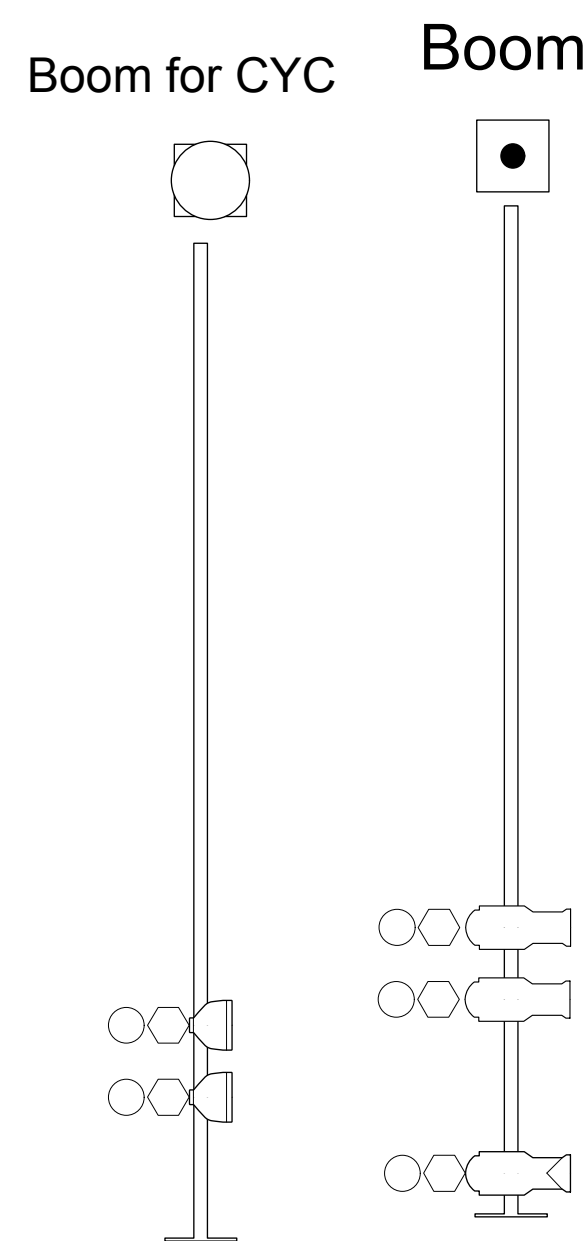


LED Pars 300-307

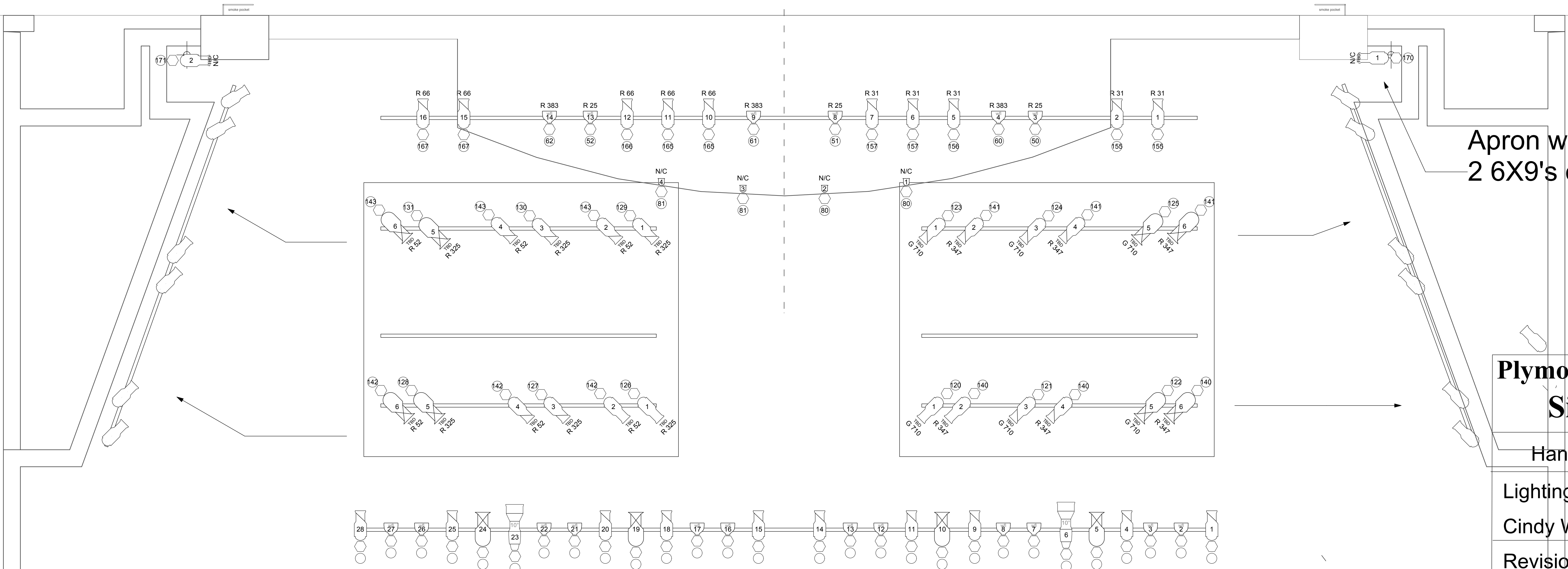
One at 2' up on a boom
one 3' up on each boom



Legend

- Source 4 Par MFL
- Source 4 Par WFL
- Altman 6x4.5
- Altman 6x9
- Altman 6x12
- Altman 6x16
- Boom
- 3" Fresnel
- New LED PAR

LS 30	FULL BLACK	32'-3"
LS 29	EMPTY	31'-9"
LS 28	BOUNCE	31'-3"
LS 27	8TH ELECTRIC	28'-9"
LS 26	CYCLOPAMA	27'-0"
LS 25	7th elect/ 6th leg	26'-3"
LS 24	5TH BORDER	25'-9"
LS 23	6TH ELECTRIC	23'-9"
LS 22	BLACK SCRIM	23'-3"
OS	Orchestra Shells	22'-3"
LS 21	FULL BLK TRVLR	21'-3"
LS 20	5TH BORDER	20'-9"
LS 19	5TH ELECTRIC	19'-3"
LS 18	4TH LEGS	18'-3"
LS 17	4TH BORDER	17'-9"
LS 16	4TH ELECTRIC	16'-9"
LS 15	EMPTY	15'-9"
LS 14	3RD LEGS	14'-9"
LS 13	3RD BORDER	14'-3"
OS	Orchestra Shells	fixed
LS 12	3RD ELECTRIC	11'-9"
LS 11	EMPTY	10'-9"
LS 10	EMPTY	10'-3"
LS 9	2ND ELECTRIC	9'-3"
LS 8	2ND LEGS	8'-3"
LS 7	FULL BLK TRVLR	7'-9"
LS 6	2ND BORDER	7'-3"
OS	Orchestra Shells	Fixed
LS 5	EMPTY	5'-9"
LS 4	FIRST ELECTRIC	3'-9"
LS3	FIRST LEGS	2'-9"
LS2	FIRST BORDER	2'-3"
	GRAND DRAPE	SR
LS1	SHOW PORTAL	0'-9"



Apron wash with gobo's
2 6X9's on each side

**Plymouth State University
Silver Center**

Hanaway Theatre: *CDE Plot*

Lighting by: Jaime Mancuso and
Cindy Wade

Revision Date: Spring 2016

Scale : 3/8" = 1"