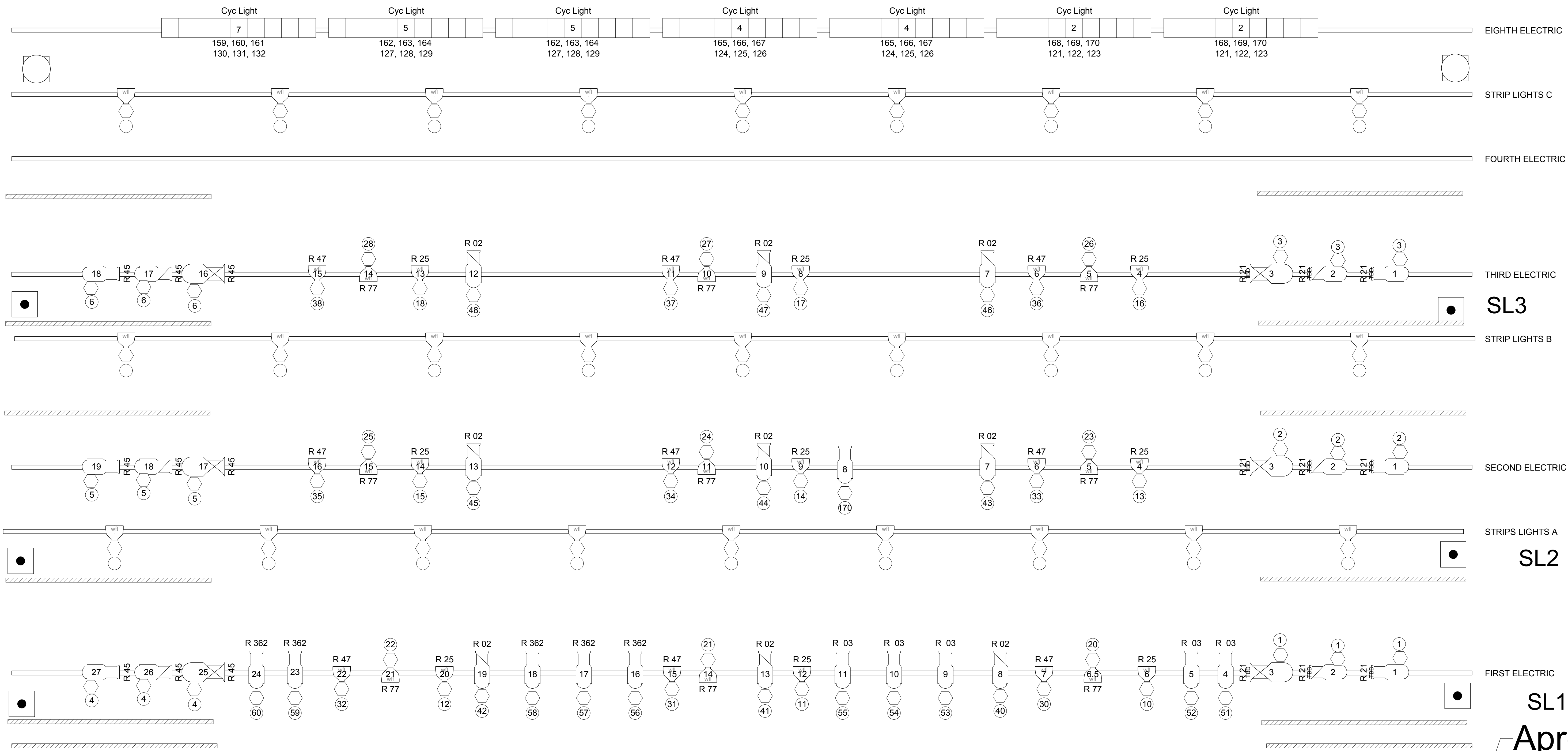


One at 2' up on a boom  
one 3' up on each boom



### Legend

- Source 4 Par MFL
- Source 4 Par WFL
- Altman 6x4.5
- Altman 6x9
- Altman 6x12
- Altman 6x16
- Boom
- 3" Fresnel
- New LED PAR

LS 30	FULL BLACK	32
LS 29	EMPTY	31
LS 28	BOUNCE	31
LS 27	8TH ELECTRIC	28
LS 26	CYCLORAMA	27
LS 25	7th elect/ 6th legs	26
LS 24	5TH BORDER	25
LS 23	6TH ELECTRIC	23
LS 22	BLACK SCRIM	
OS	Orchestra Shells	22
LS 21	FULL BLK TRVL/R	21
LS 20	5TH BORDER	20
LS 19	5TH ELECTRIC	19
LS 18	4TH LEGS	18
LS 17	4TH BORDER	17
LS 16	4TH ELECTRIC	16
LS 15	EMPTY	15
LS 14	3RD LEGS	14
LS 13	3RD BORDER	14
OS	Orchestra Shells	13
LS 12	3RD ELECTRIC	12
LS 11	EMPTY	11
LS 10	EMPTY	10
LS 9	2ND ELECTRIC	9
LS 8	2ND LEGS	8
LS 7	FULL BLK TRVL/R	7
LS 6	2ND BORDER	7
OS	Orchestra Shells	6
LS 5	EMPTY	5
LS 4	FIRST ELECTRIC	3
LS 3	FIRST LEGS	2
LS 2	FIRST BORDER	2
	GRAND DRAPE	5F
LS 1	SHOW PORTAL	0

